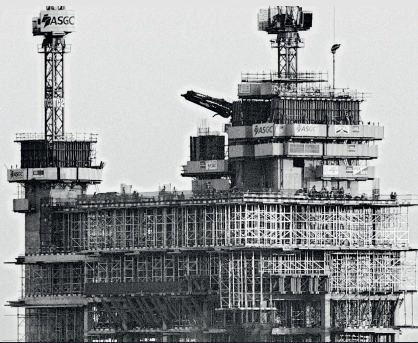




GREENWICH CONSTRUCTIONS

V I L A S A M

BAKTHAVATCHALAM
COLONY
VADAPALANI



www.greenwichconstructions.co.in



ABOUT US

GREENWICH CONSTRUCTIONS, a firm started in the year 2020, have successfully completed 10+ projects since incorporation. We have built our reputation from the ground up, just like our buildings and expanding the trust and strength through our upcoming landmark projects.

Backed by a team of talented and energetic youngsters, we are expanding at an exponential rate, thanks to our client base and the trust we have received from the general public.

"Creating Address with being the epitome of quality, budget, luxury, and everything else"

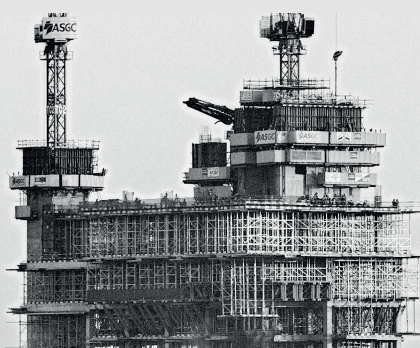


PROJECT DESIGN

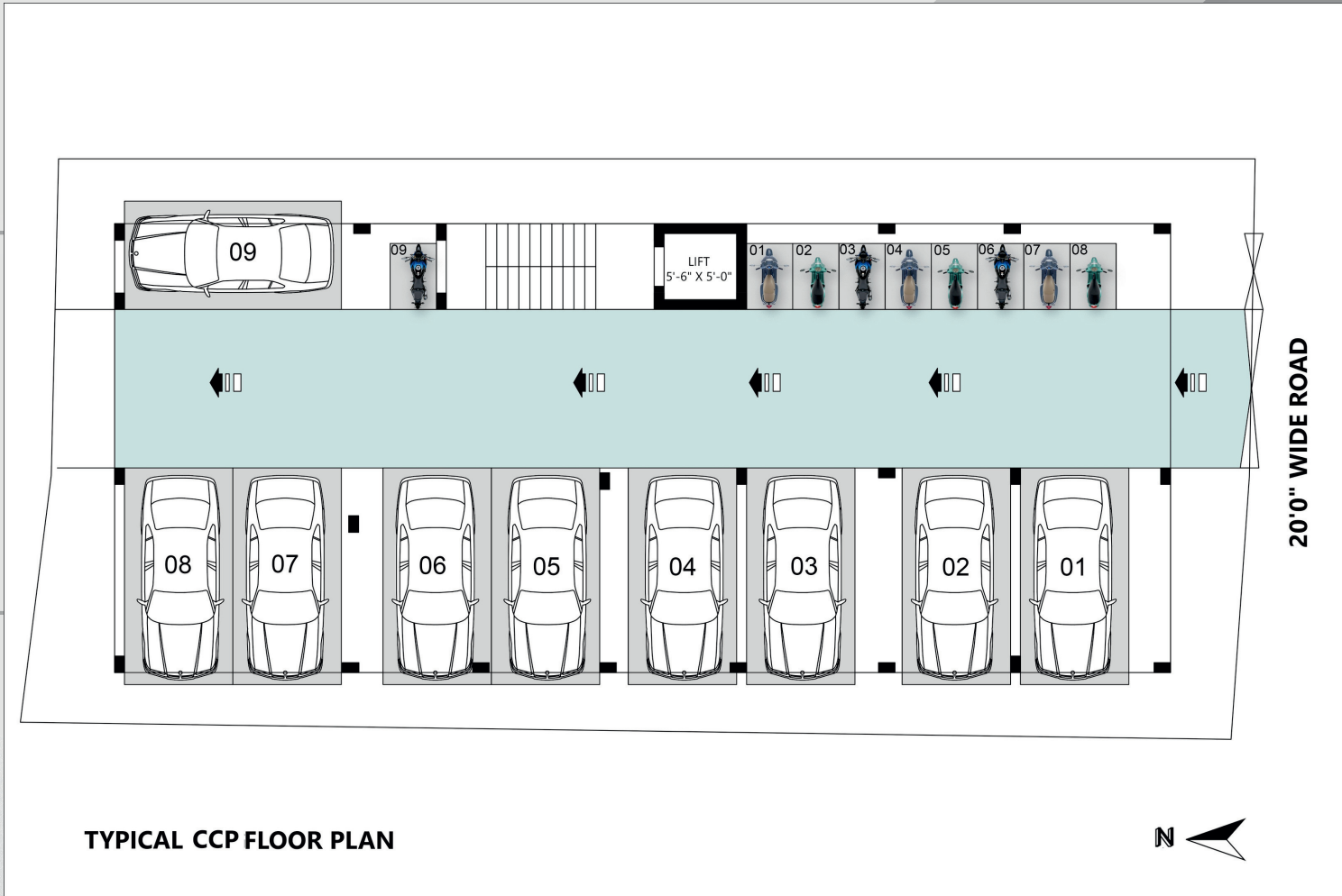
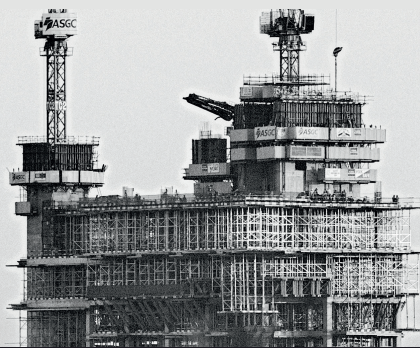
Sitting on a land area of 3960 sq.ft., facing the south direction on a 20 feet wide road leading to the J N Road, this project comprises of the structure , Stilt plus 3 upper floors, housing 9 dwellings (three in each floor),

Each floor consists of three dwellings and each measuring at 1. **1399** sq.ft. (Flat Nos. 101, 201 and 301) , 2. **838** sq.ft. (Flat Nos. 102, 202 and 302) and 3. **934** sq.ft. (Flat Nos. 103,203 and 303).

Ample car parking spaces has been provided in the stilt floor. This project provides easy connectivity throughout the city due to its easy access to the existing and upcoming Metro Stations.



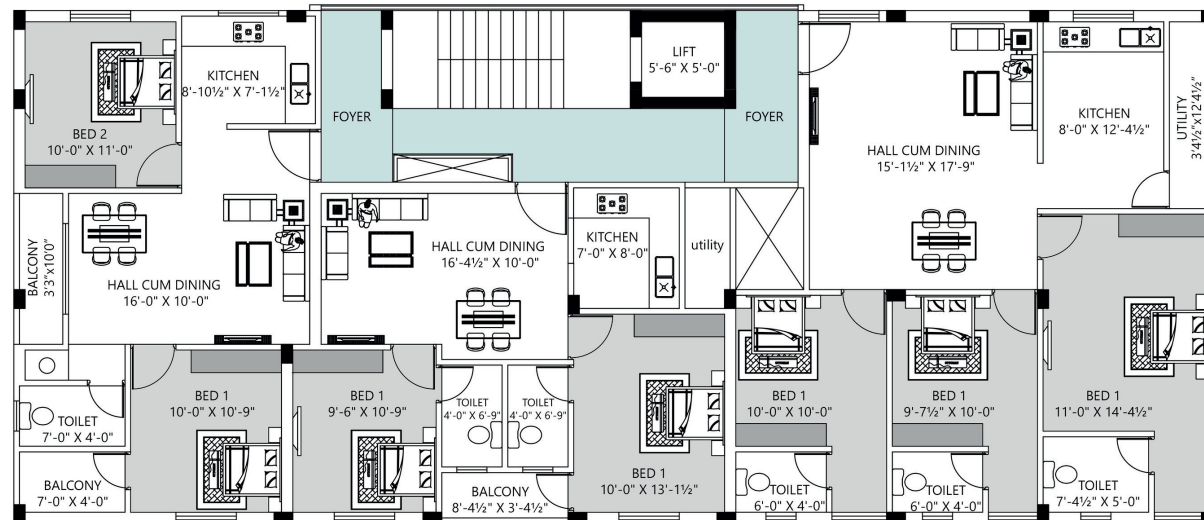
FLOOR PLAN



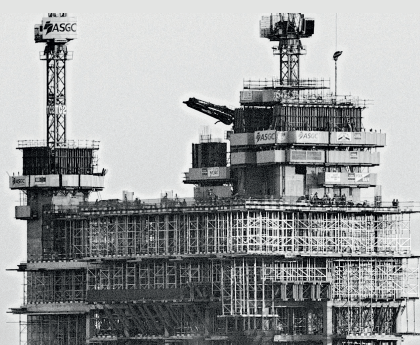
TYPICAL CCP FLOOR PLAN



FLOOR PLAN



TYPICAL 2nd & 3rd FLOOR PLAN





GREENWICH

BUILDING CONSTRUCTION

Being a stilt plus three structure, 5 feet set back has been provided on each side, paving way for ample natural lighting and ventilation. The design itself is an earthquake resistant **RCC (Reinforced Cement Concrete) structure** with Reinforcements as per the ISI Standards.

The walls are **red bricks walls, 4.5 inches and 9 inches** thickness with cement mortar provides great strength for life time.

The **granolith flooring** in the stilt floor provides greater durability and the **paver blocks** in the set back provides easy access to the underground lines and provides greater scope for ground water regeneration.

www.greenwichconstructions.co.in

ELECTRICAL SETUP

We provide ample electrical points in each and every room, eliminating the scope for renovation or addition in the future.

The work done by our highly professional electricians guarantees a safe and secure home with no risk whatsoever.

1. Wires - Orbit or equivalent

2. DB : L&T/ Salzer/ equivalent

3. Switches - Orbit Modular

4. Safety Grounding



PLUMBING SERVICES

A well laid out rain water harvesting plays a vital role in the ground water renewal. 350+ feet deep **6 Inch Borewell and a 15000+ litre Underground Sump** provides for the water requirement of the dwellers .

Providing adequate water through the **twin over head tank**, provision for drinking water is made available to the kitchens of each dwelling.

1. Pipes : Finolex/Astral/ equivalent

2. CP Fittings : Parryware

3. Sanitarywares : Parryware

4. Pressure and leak tested



1.

1200mm x 600mm Vitrified
Tile Flooring

2.

Premium Emulsion finish

3.

Biometric Smart Lock

4.

UPVC Windows

INTERIOR FINISHING

Greeting us on the entry is a **polished teak wood main door with biometric smart locks**. A well laid out flooring finished with **4 feet by 2 feet vitrified tiles** giving a marble like finish and gloss.

The walls are finished with **2 coats of putty, one coat of primer and 2 coats of premium emulsion** and whereas the **doors are enamel painted** to give a matte finish for longer durability.

Long lasting **UPVC windows secured with MS grill** to improve the aesthetic appeal.

Kitchen counters are wall cladded upto 2 feet from the counter top, whereas the toilets are cladded from the **floor to the ceiling**.



1.

Paint : Asian Weathershield Paints

2.

Elegant Elevation

3.

Spot Lights for the glow

4.

Exterior Cladding



GREENWICH

EXTERIOR FINISHING

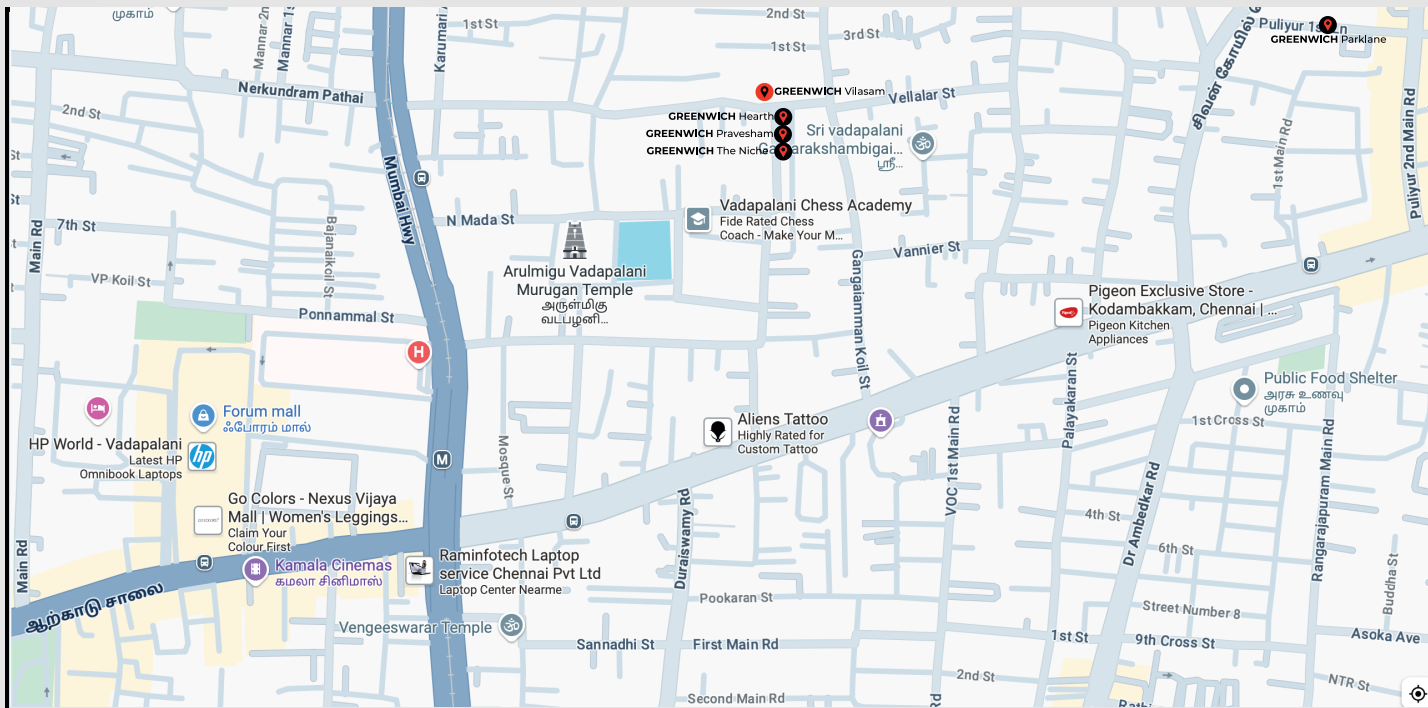
The well crafted elevation of the building is brought to life with the architect specified materials and claddings.

One coat of primer and 2 coats of weather proof emulsion to the exterior adds life to the building providing shield from dust and weather.

Guarded 24x7 by the state of the art **CCTV Surveillance** the system provides security to the highest standards.

www.greenwichconstructions.co.in

LOCATION MAP



1. Nearest Temple : Arulmigu Vadapalani Murugan Temple
2. Nearest Hospital : SIMS Hospital, Vadapalani
3. Nearest Mall : Nexus Vijaya Mall, Vadapalani.
4. Nearest Metro Station : Vadapalani Metro Station
5. Nearest School : Saraswathi Vidhyalaya. Vadapalani



www.greenwichconstructions.co.in





GREENWICH CONSTRUCTIONS

GET IN TOUCH WITH US:



No. 26/38, Circular Road, United India
Colony, Kodambakkam, Chennai - 24.



+91- 72000 55755 / +91-72000 66977



greenwichconstructions@yahoo.com



www.greenwichconstructions.co.in

